

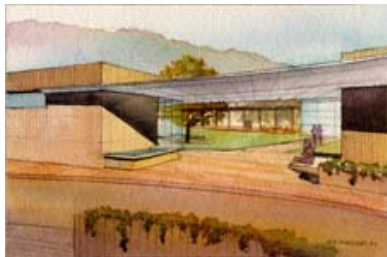


Story Board Images for Chong Partners

Proposed Community Hospital
of Monterey Peninsula
Watercolor 4 Hours Each



Arrival



Connecting Spaces



Open Reception Areas



Courtyard



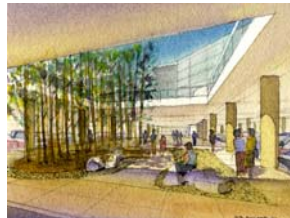
Multi-function Community Space

THE TWO PROJECTS
STORYBOARDED WERE
COMPLETED WITH MOSTLY
VERBAL INPUT FROM THE
DESIGN TEAM AND
PRODUCED AT THE OFFICE
OF GORDON H. CHONG &
PARTNERS. PRESENTED AT
AN EXTREMELY EARLY
CONCEPTUAL PHASE THE
STORYBOARDS WERE TO
CAPTURE THE FEELING OF
THE IDEA AND INTENT OF
THE PROJECT, NOT THE
DETAILS.

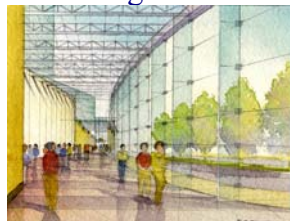
Proposed Hospital
Watercolor 5 Hours Each



Arrival



Parking Gardens



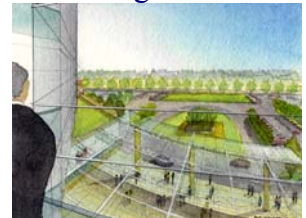
Public Corridors



Open Air Courtyard



Healing Gardens



Elevator Lobby



Monitoring



Patient Room